

POWERFIX GP 2 GROUT

General purpose, non-shrink, high strength free flow cementitious grout.

DESCRIPTION

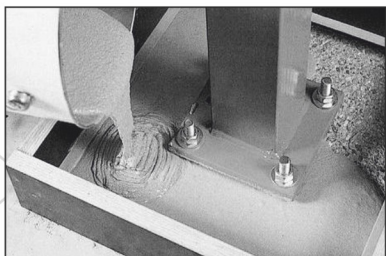
Powerfix GP2 is premixed cement based, nonferrous, non-shrink grout, exhibiting good flow characteristics. This economical performance grout offers the advantage of low water requirement and medium to high compressive strengths. POWERFIX GP2 should be specified for general purpose construction site application where the major emphasis is on ease of application. POWERFIX GP2 is supplied ready to use as a dry powder product required only the addition of water to be used for a wide range of applications. POWERFIX GP2 produces high early and ultimate strengths without intermediate or latent shrinkage POWERFIX GP2 remains stable without failure from compressive loading impact, lateral thrusts and high heat or continues vibration. The grout is chloride free can be safely used in contact with steel and can be placed in section thickness of 10mm to 100mm.

ADVANTAGE

- Prepack in factory ensure consistency in supply requires addition of water to develop a free flow, non shrinking and high strength gaining grout.
- Material shrinkage is offset by expansion during green condition and later on by mention original volume self leveling by nature.
- Easy placement and filling of under base of machinery.
- Contains no chlorides, or corrosive ingredients
- Similar appearance to concrete.



40 kg



PACKING

40 kg

SHELF LIFE

1 Year from date of manufacture in original tightly closed containers away from direct sunlight and excessive heat.